



DÉCORTECH MDF

TECHNICAL DATA SHEET

DÉCORTECH MDF

Product Description

MDF is a Medium Density Fibreboard

Product Features

- An excellent substrate for a wide range of finishes including timber veneers or painted finishes
- An environmentally friendly product
- Less expensive than many natural woods
- Good acoustic properties meaning increased noise reduction
- Prefinished panels prevent the need for additional onsite trades after installation

Finish/Appearance

Décortech MDF is used as a substrate that can be combined with either a real timber veneer to provide a natural warm finish or with Décortech factory applied UV paint finish for a fresh, clean look.

A large choice of natural timber veneers is available offering the beauty, warmth and individuality of natural timber.

Standard paint finishes range is available to review on our website - www.decortech.co.nz

Uses

Décortech MDF with real timber veneer or painted finish is ideal to use for wall and ceiling linings, decorative and acoustic panels, display panels and partition screens.

Perforation Patterns

Combine the natural warmth of Décortech MDF with Real timber veneer and the acoustic properties of panel perforations. All Décortech standard perforations are available including slots, holes and Multigroove as well as any custom designed perforations. Custom size panels, cut-outs for lights, and negative edge details can also be provided. For standard perforations, available please visit our website at www.decortech.co.nz or speak to the team at Décortech to discuss any one of a kind or custom requirements.

Acoustics

Décortech MDF is an ideal material to specify for acoustic attenuation as MDF is a good acoustic absorber. When combined with our standard perforations or any custom designs it is possible to achieve perfect acoustics for any space. Additionally, Decoustic 85 felt is bonded to the back of the panels as standard to further increase the acoustic properties. Décortech panels have been tested to ISO11654 by the University of Auckland in conjunction with Marshall Day Acoustics. Please see our website for specifications in downloadable PDF form for all of our standard perforations. Each perforation pattern is specified as to percentage open area (required by Acoustic Engineers) and a Noise Reduction Coefficient (NRC) value which indicates percentage of noise absorbed.

Substrate Description

Décortech MDF is a medium density fibreboard that is available in Natural or Black or Grey core the density is approximately 700m³.

Sheet Sizes

Standard panel sizes are 2400 x 1200mm available in 9mm, 12mm, 16mm, 18mm and 25mm thicknesses. 3600 x 1200 x 12mm, 16mm & 18mm. Black core MDF is only available in 12mm & 16mm 2400 x 1200. Grey core is available in 12mm x 2400 x 1200. Other sizes can be sourced for large orders. Veneers are always pressed to face and back to prevent sheet curl. Timber veneer adds 1mm to total board thickness so 12mm becomes 13mm and 15mm becomes 16mm.

Décortech can also route to custom sizes as well as supplying negative edge details and specialist edge details such as miters, rebates, and drop in tile profiles.

Fire Rating

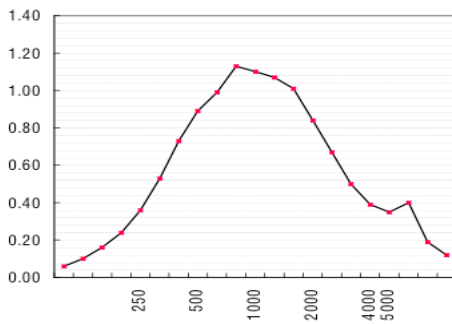
Décortech MDF has no fire resistant properties. Should a fire rating be required please refer to Decortech Firesafe MDF or Decortech Firesafe Decorply Plywood.



Example of Acoustic Testing Results for SR1068 Slotted Panel

Sound Absorption Prediction

NRC 0.80 14% Open Area



— with Autex AAB 35-50 acoustic backing

For further information regarding Décortech MDF please contact Décortech.

DECORTECH LTD
Freephone: 0800 211 311
Phone: +64 9 579 5726
Fax: +64 9 579 0462
www.decortech.co.nz



DÉCORTECH MDF

Pre-Finishing

Décortech panels come pre-finished as standard. Clear or a range of colours is available with the coating applied down our Paintline. The computer controlled application of paint gives a high quality, run free finish each time and our UV coatings cure instantly allowing for high productivity rates and a premium finish, making it a cost effective solution. Our clear satin finish is a special non-yellowing formulation which provides excellent durability and resistance to chemicals and scratching. The standard finish is two coats of paint to the face. Edges can be painted on request, please note on the specification and advise at time of ordering if this is required. Please contact us for pricing or for samples of standard edge painting.

Environment

Décortech Firesafe MDF is environmentally friendly and produced under an environmental management system that is certified to ISO-14001.

Wood veneers are sourced from sustainable and renewable forests and EC, FSC and COC veneers can be provided on request.

Due to our Paintline and the contained process of applying paint, our clear satin finish has low to no VOC content once applied and cured resulting in reduced Greenhouse gas emissions and hazardous waste disposal.

Formaldehyde Levels

E0 MDF can be provided on request.



Fixing Options

Walls:

Battens or studs at 600mm centers maximum, with fixing at 200mm centers maximum around perimeter and 400mm centers maximum through center area of the panel. We recommend good quality builder's adhesive combined with some form of positive fixing i.e. screws or panel pins.

Ceilings:

Battens should be at 400mm centers maximum, with fixing at 200mm centers maximum around perimeter and 400mm centers maximum through center area of the panel. We recommend good quality builder's adhesive combined with some form of positive fixing i.e. screws or panel pins. We recommend at least a 3-5mm negative detail between all edges of the panels. Fixing options as below depending on how sheet is sold.

Option 1 – Plain Sheet

Screw fix using countersunk screws 7-gauge x 25mm long minimum.

Option 2 – Acoustic Slotted Sheet

For concealed fixing please specify stepped slots which give a landing at the end of the slot thru which to screw fix. For surface screw fixing use countersunk screws 7 gauge x 25mm long minimum.

Option 3 - Acoustic sheets with Holes

Use countersunk screws with a head size slightly larger than the hole size and drive in until flush with the surface.

Option 4 - Multigroove Acoustic Profile

Available on 15/16mm Décortech MDF. We recommend use of customized pneumatic staple gun (available for hire from Décortech) or panel pins. Panels should be stapled or pinned to timber battens at 300mm centers.

How To Specify:

1. Décortech MDF
2. Sheet size and thickness
3. Select Veneer if required.
3. Perforation (Holes, slots, Multigroove, Custom) e.g. HR513
4. Perforation border, e.g. 50mm
5. Finish e.g. Decortech Factory Applied Clear Satin Finish
6. Apply Decoustic 85 felt to back

Extensive modification can be made to our patterns, so please contact us to discuss options for stopping perforation around penetrations (light fittings, sprinklers, diffusers, PIRs etc.) or any custom designs.

Masterspec

For downloadable specifications please see Masterspec 5172D Décortech or our website.

For further information regarding Décortech MDF please contact Décortech.

DECORTECH LTD
Freephone: 0800 211 311
Phone: +64 9 579 5726
Fax: +64 9 579 0462
www.decortech.co.nz

 **décortech**
Architectural panels

DÉCORTECH MDF

Shop Drawings

Prior to manufacturing, shop drawings are done for approval for every panel we make to ensure that our panels are made right, first time. This enables customers and specifiers to clearly see what they are getting and to easily make changes. Full assembly drawings are also usually provided showing the complete wall or ceiling assembly. The shop drawing process has been invaluable to our installers as potentially timely and costly mistakes are picked up on paper and fixed before they become problems during construction.

Samples

Samples are indicative only and as veneers are natural wood there will be variations in colour and grain and occasional imperfections. Should a colour match be required to a sample this must be noted and the sample provided at time of ordering. Final panels will be matched as closely to the sample as nature will allow. Please send all correspondence in writing. Samples are valid for 6 months.

Veneers

Please note darker veneers have greater colour variations and veneers will vary in colour and grain. Veneers can be grain matched to ensure no inconsistencies however, should this be required an additional 10% cost will apply. Should you require a close colour match when using veneer please supply a sample for colour matching at the time of order and we will endeavour to match as close as nature will allow. Due to such variations, to achieve best possible consistency across a project, all the veneer required to complete the job should be ordered and pressed at the same time as colour and grain cannot be guaranteed to match at a later date. In the case of large projects, it is best if several months' notice is given.

Installation

Décortech Acoustic Panels are for indoor use only. Before installation the building should be fully closed in and well dried out with ambient humidity between 25 - 85%. Maximum humidity in the underlying construction should not be more than 15%. Please note: for areas that have increased moisture or high humidity we recommend Plywood, please contact us for our Plywood options.

Care Instructions

We recommend cleaning the panels when required with a warm damp cloth. Do not use any solvents or abrasive cleaners.



Handling & Storage

Panels must be installed by a qualified tradesman and handled with care. The product must be stored inside, off the ground, in dry condition. Panels must not be left wrapped in a non-breathable material (i.e. Plastic) for longer than 4 days and should be unpacked and aired once they arrive onsite. Interior plywood must not be used in exposed, wet or damp conditions. Panels should be kept fastened in a flat pack squarely on top of one another on site to reduce the chance of the sheets bowing or any edge discoloration.

Precautions & Limitations

Décortech MDF is not recommended in exposed, damp or wet conditions and swells and breaks when in contact with water. It may warp or expand if not sealed. It should not be used in areas subject to high humidity. The MDF substrate may have significant colour variations from batch to batch.

While every endeavour has been made to ensure that all information contained in this product sheet is accurate, it is intended to be used as a guideline only. We reserve the right to amend specifications without notice.

For further information regarding Décortech MDF please contact Décortech.

DECORTECH LTD
Freephone: 0800 211 311
Phone: +64 9 579 5726
Fax: +64 9 579 0462
www.decortech.co.nz

 **décortech**
Architectural panels